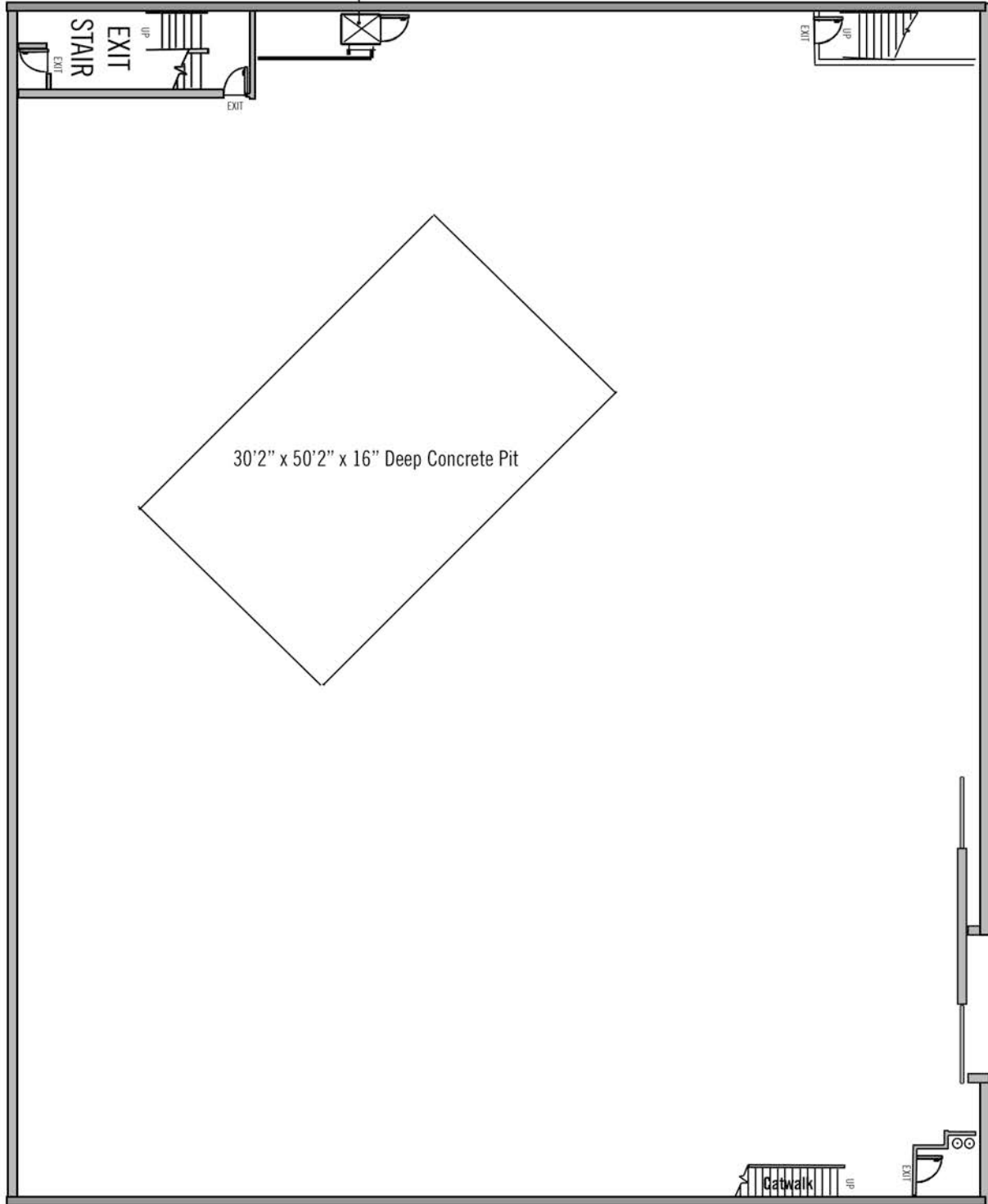




Stage 1

150' x 120'
43' to grid

McKinley
Chair Lift



Maryland Street

Stage Alley

17' 3/4" x 16'h"

Catwalk

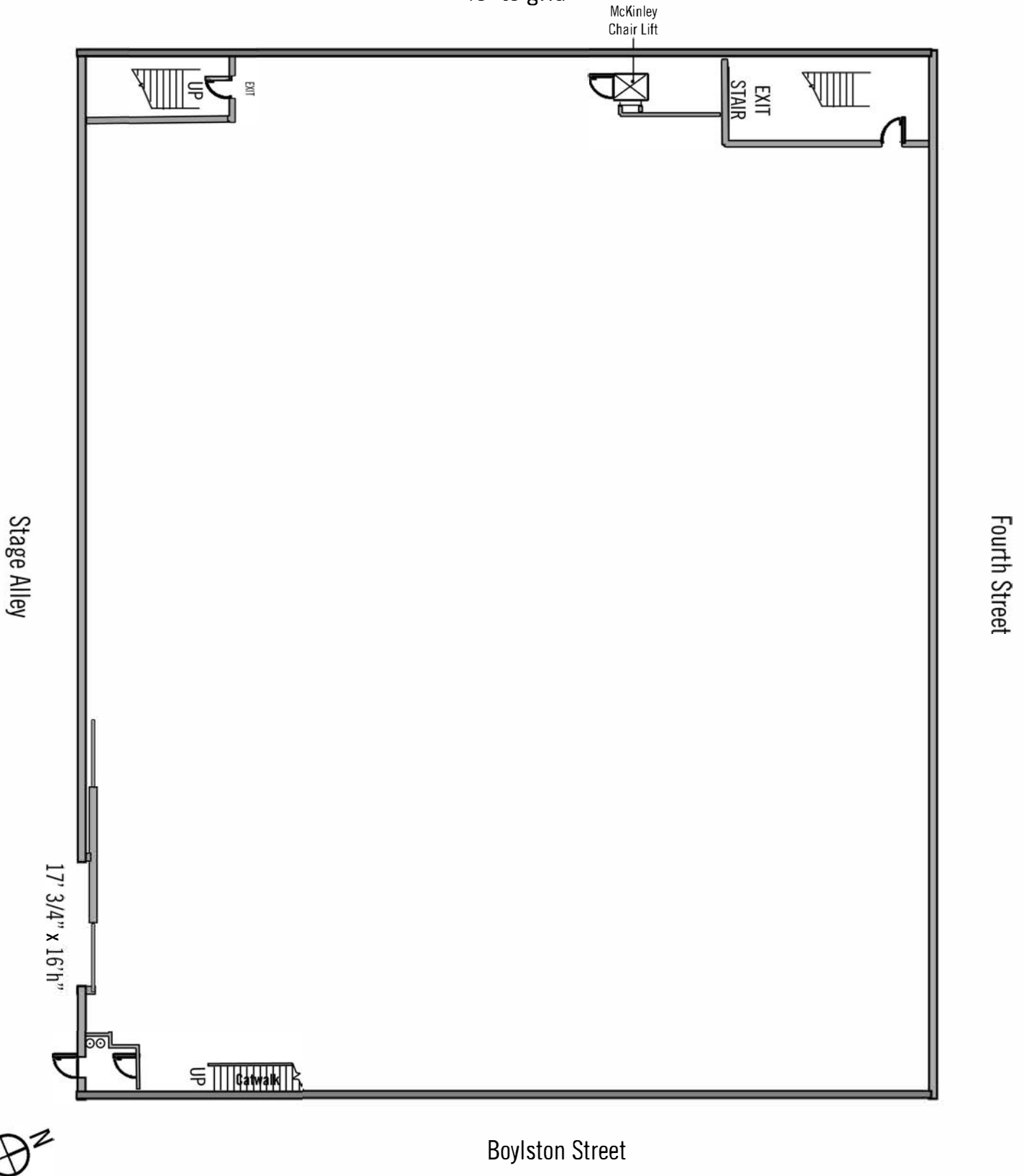
Boylston Street





Stage 2

150' x 120'
43' to grid

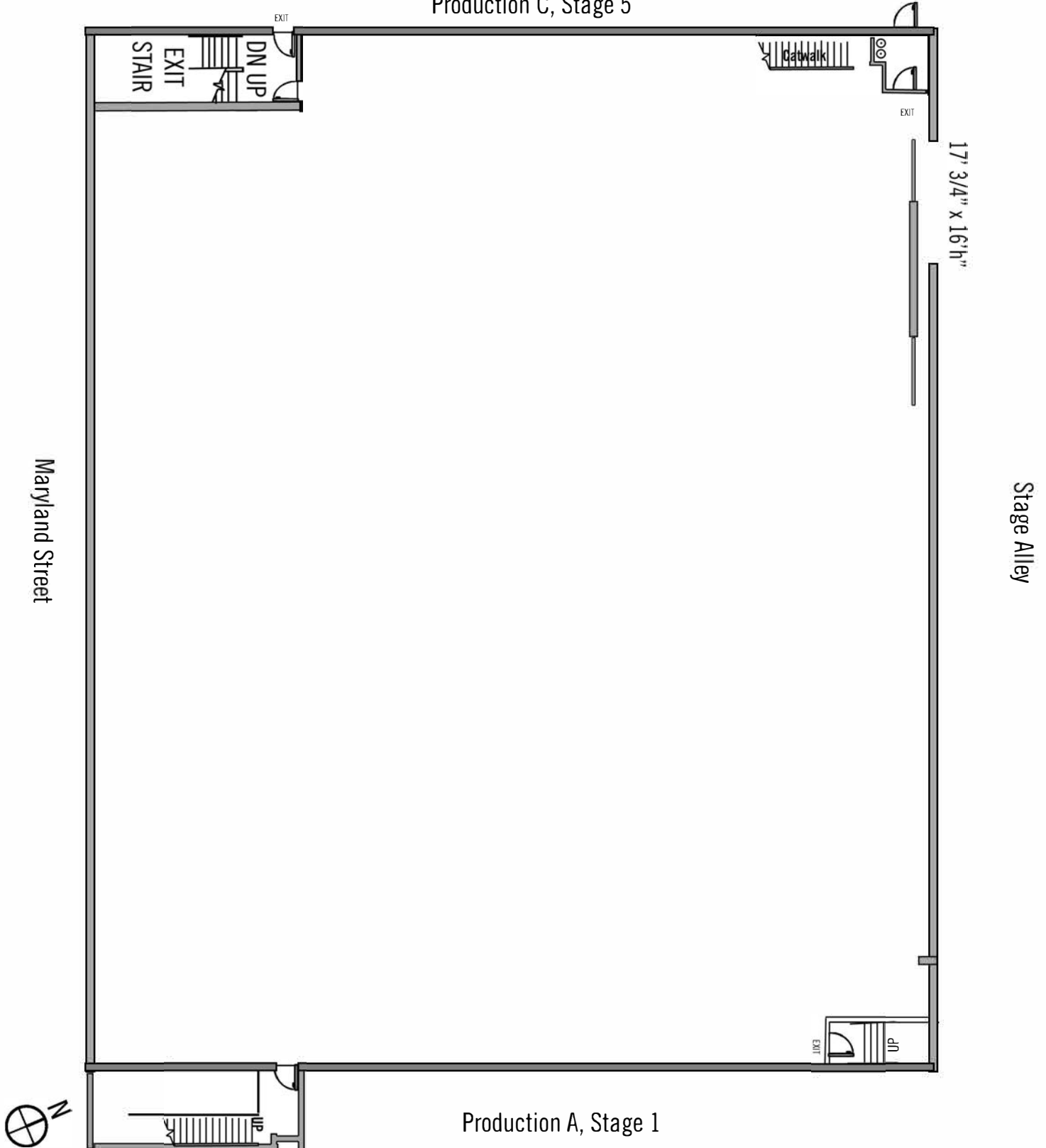


Stage 3

150' x 120'

35' to grid

Production C, Stage 5

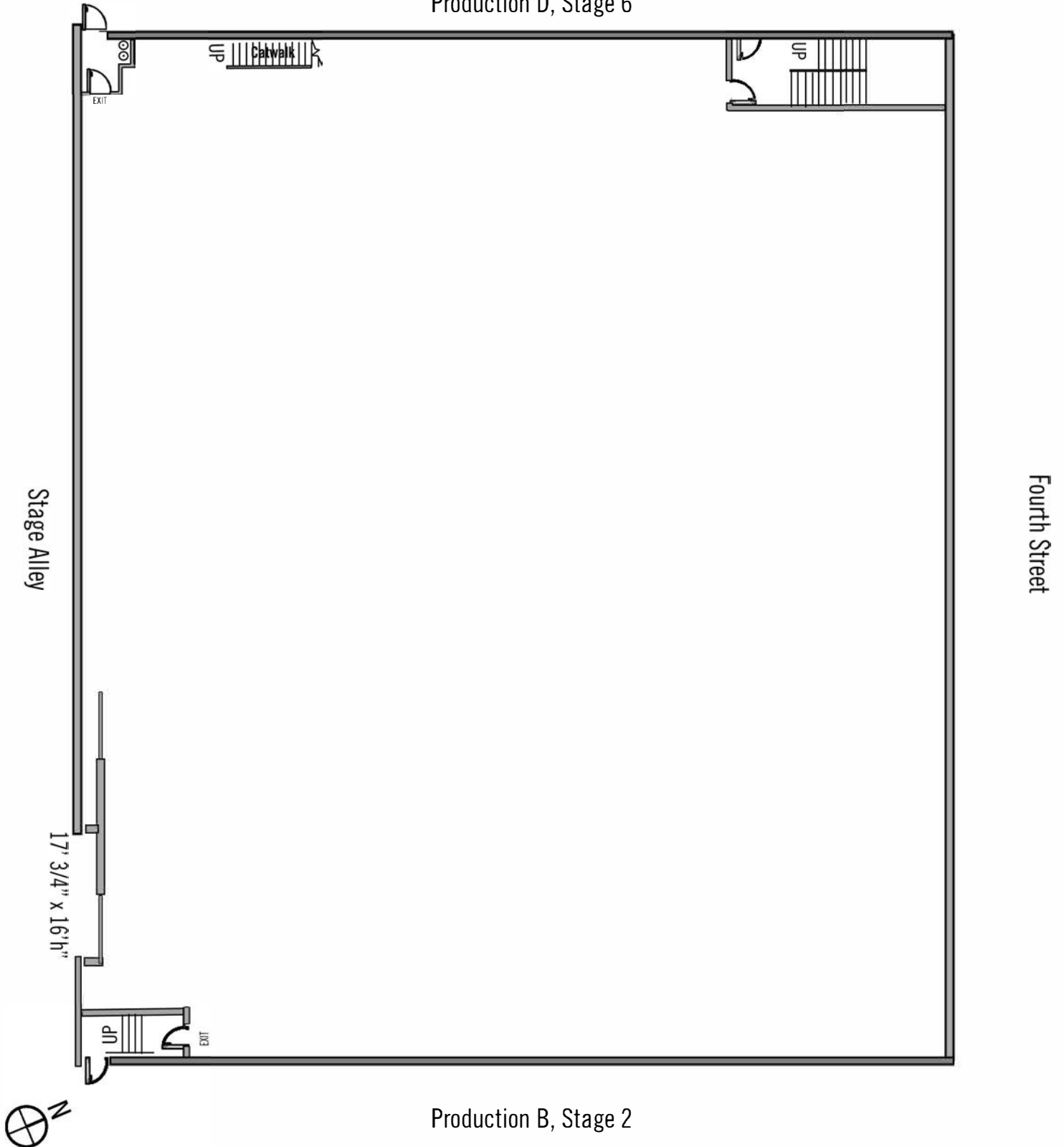




Stage 4

150' x 120'
35' to grid

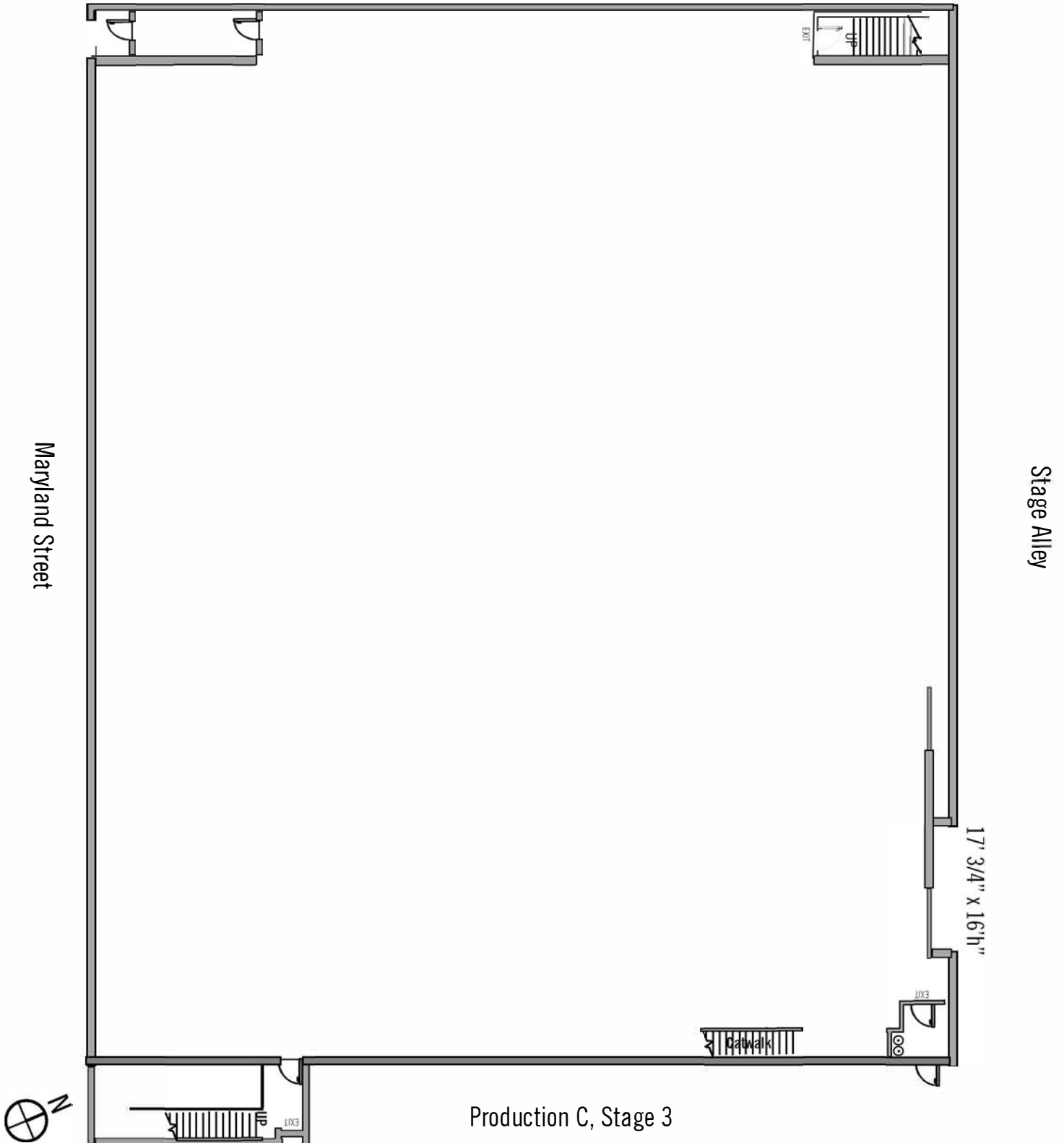
Production D, Stage 6



Production B, Stage 2

Stage 5

Bixel Street 150' x 120'
35' to grid





Stage 6

150' x 120'

35' to grid

Bixel Street

